

1. Table of Contents (This Page)

Created on Wed Oct 9 21:01:06 2013

2. component

3. solder

4. outline

5. signal1

6. plated-drill

7. componentmask

8. soldermask

9. topsilk

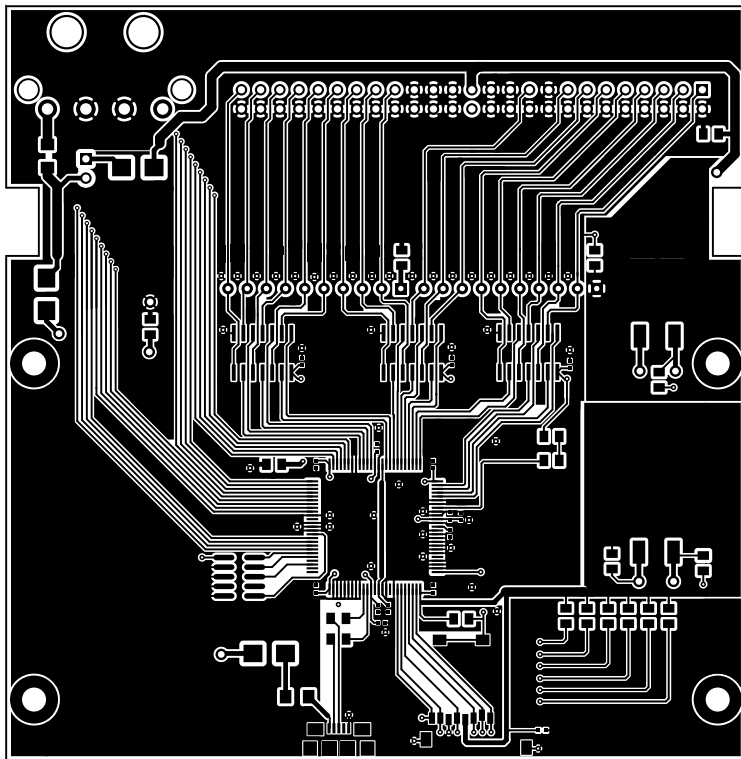
10. bottomsilk

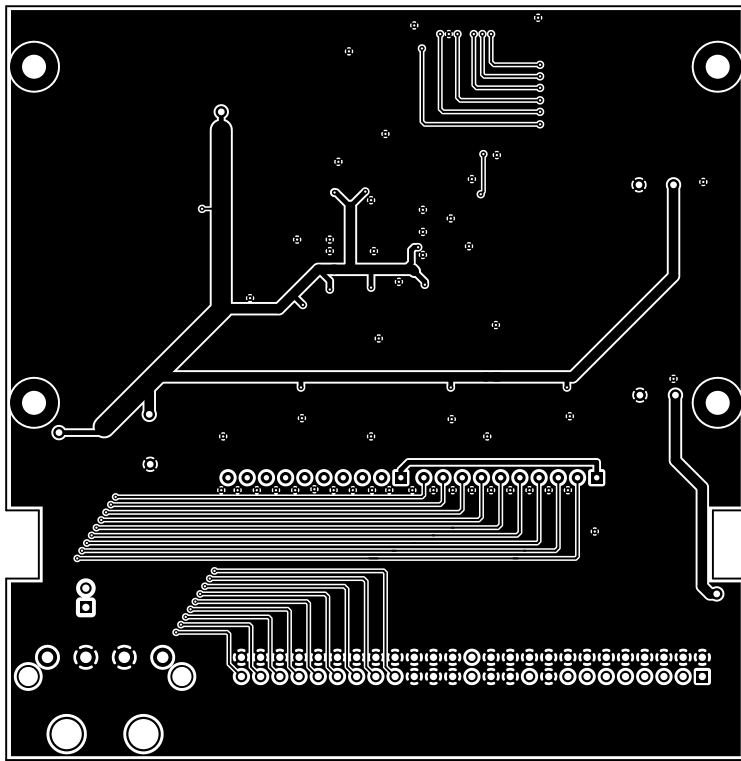
11. toppaste

12. topassembly

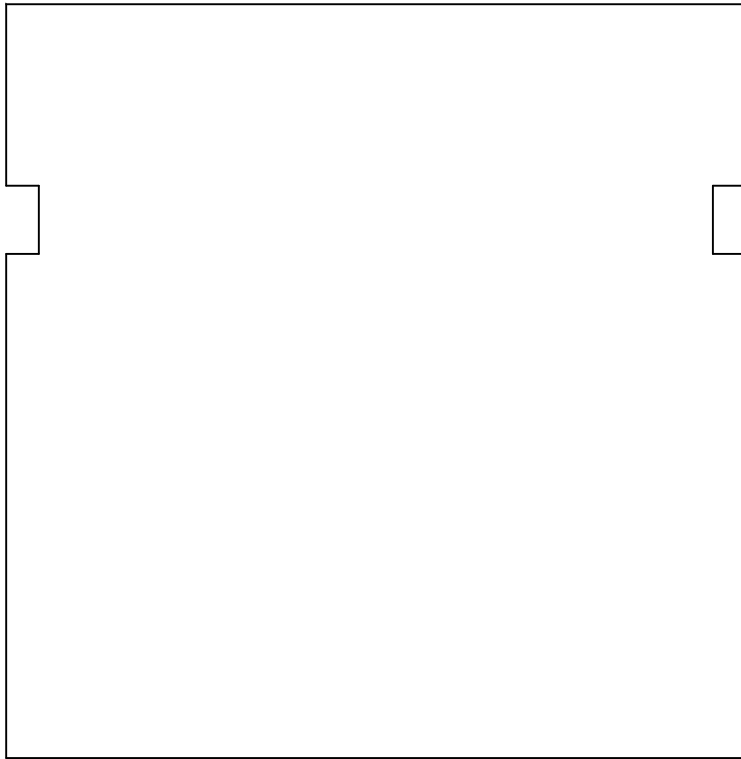
13. bottomassembly

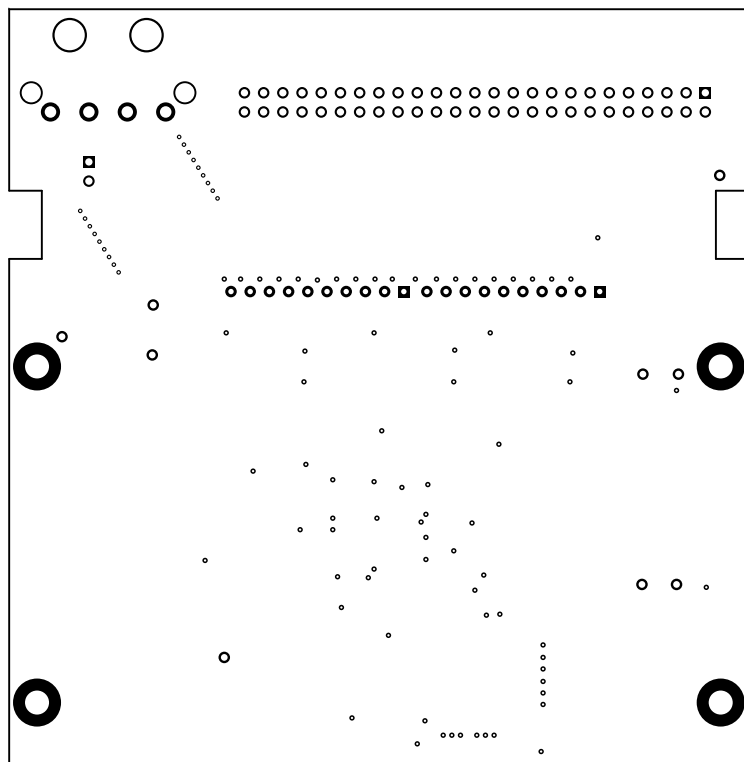
14. fab

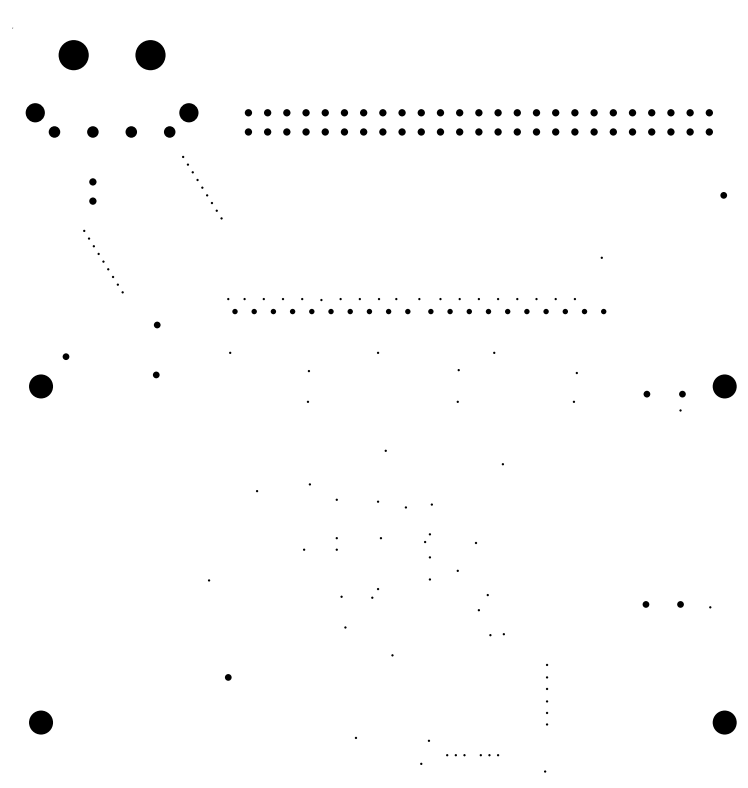


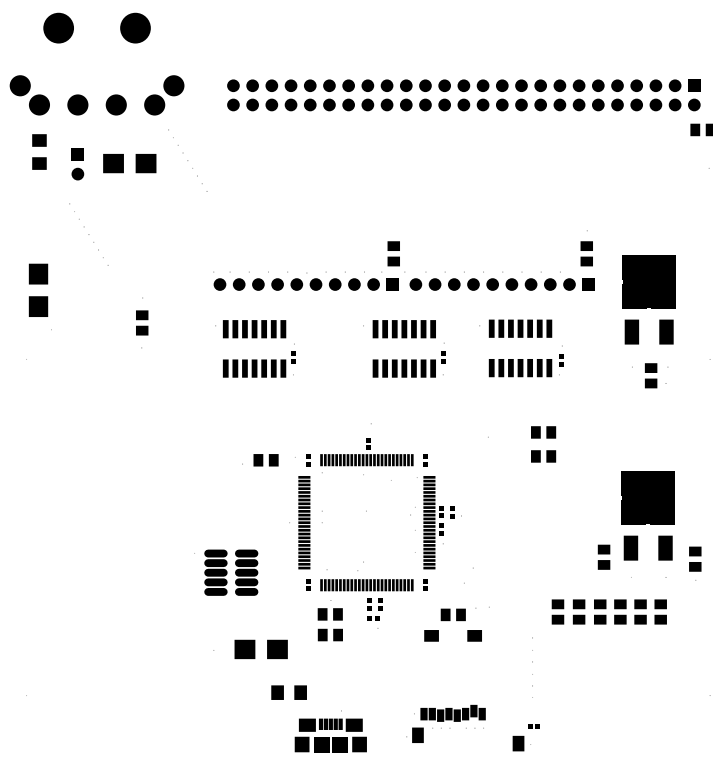


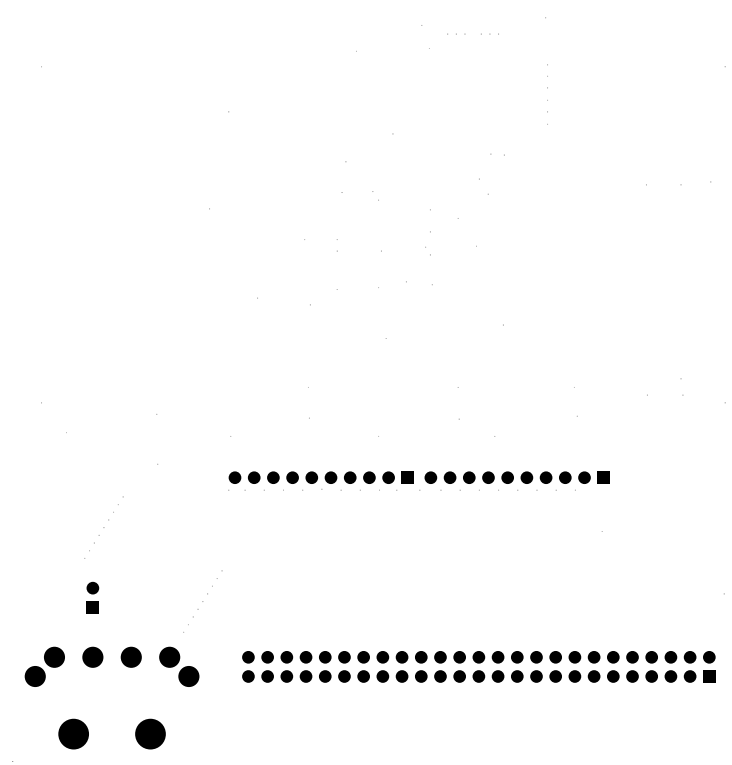
bottom (mirrored), scale = 1:1.000
scsi2sd.pcb

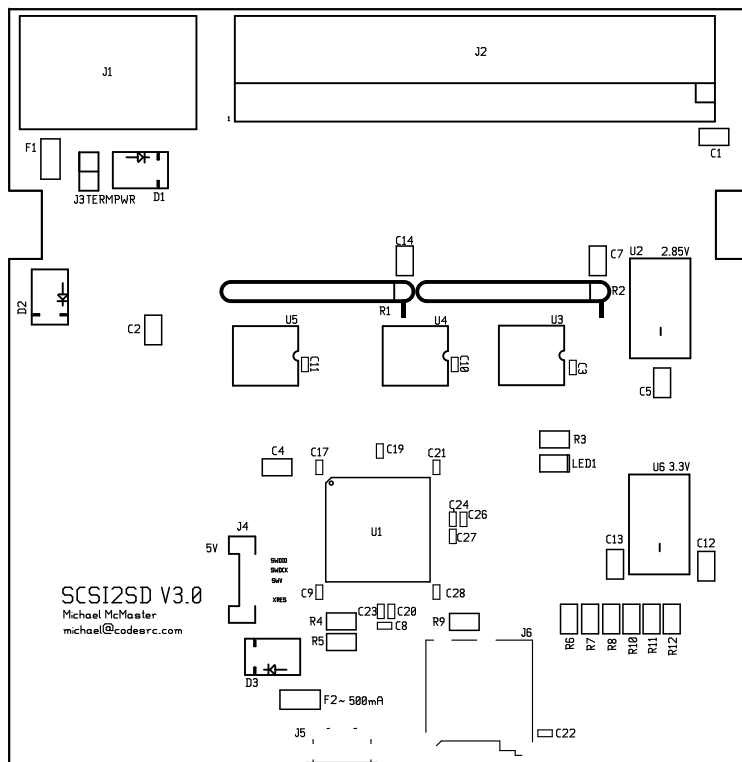


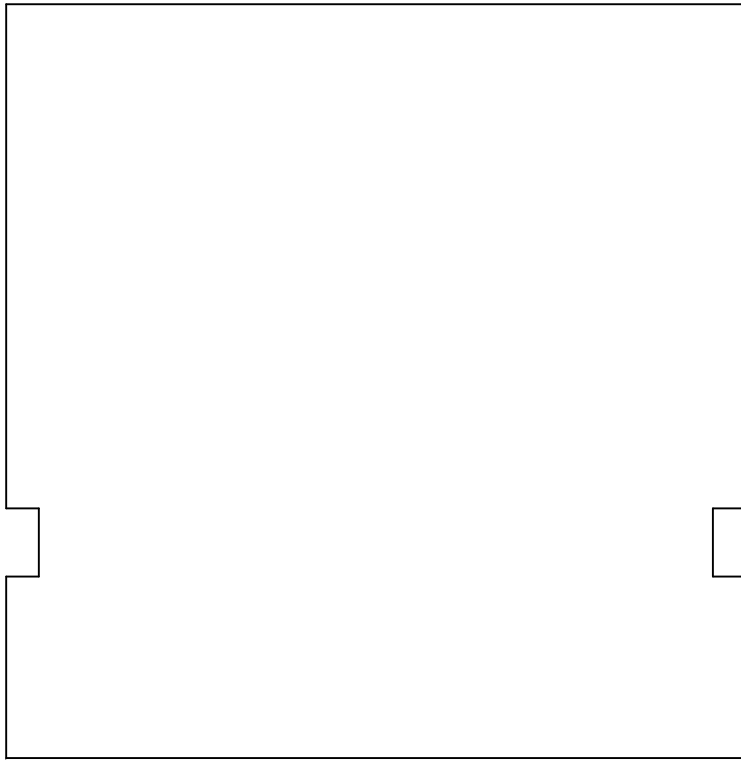


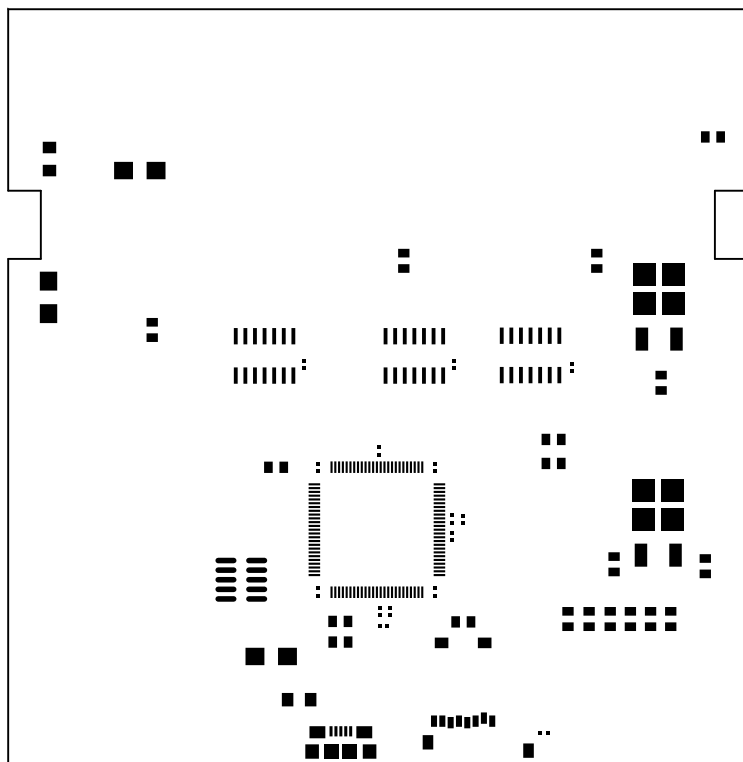


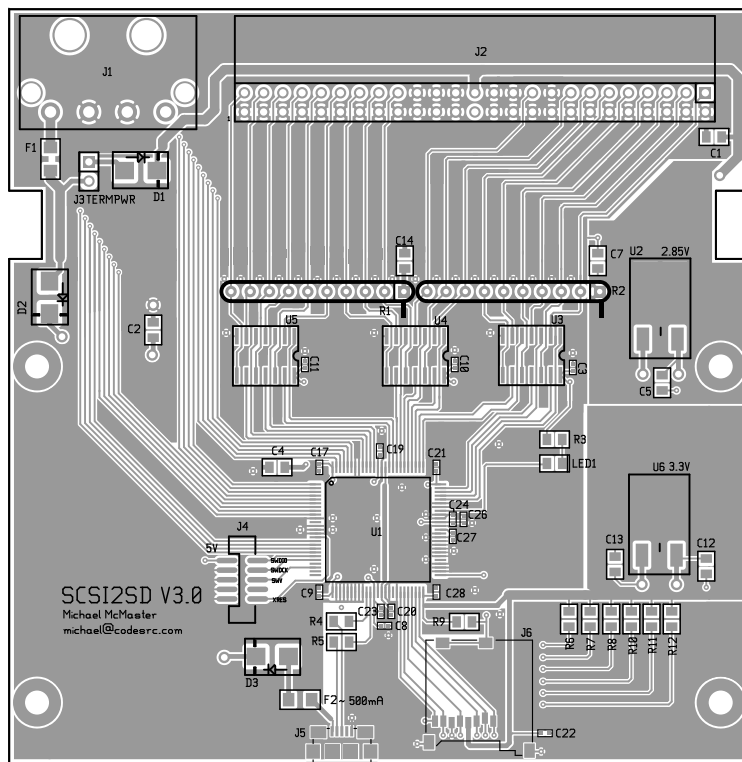


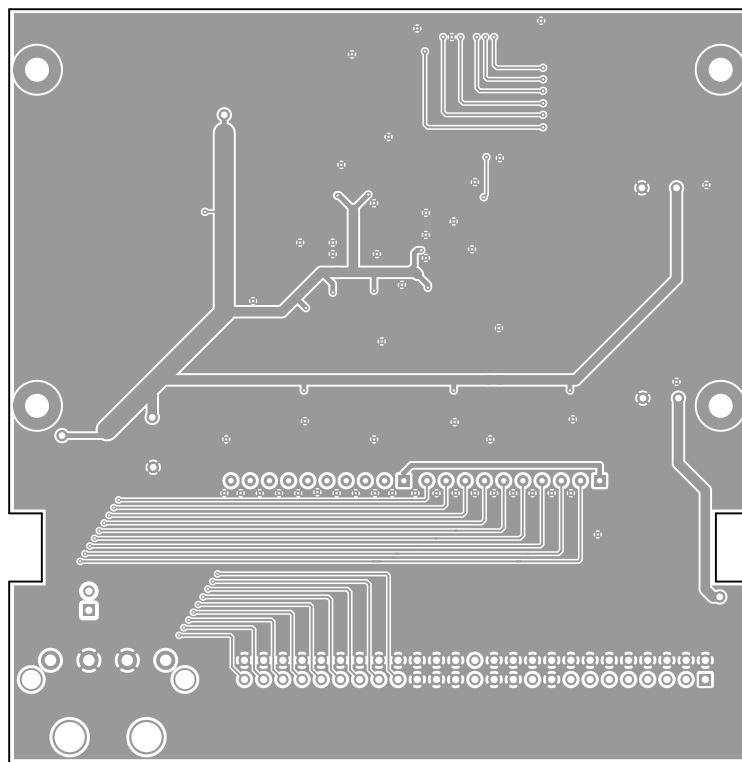








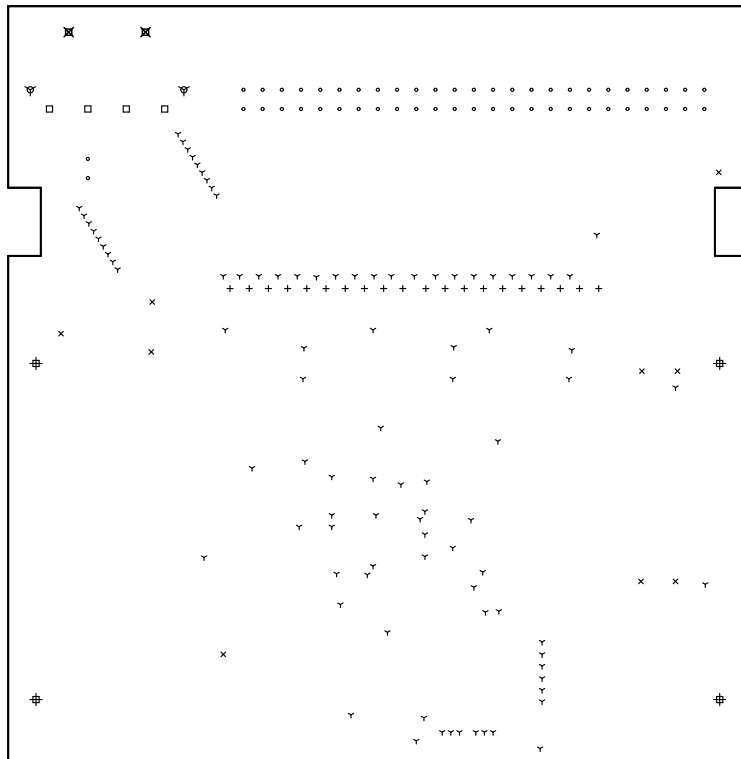




There are 8 different drill sizes used in this layout, 186 holes total

Symbol	Diam. (Inch)	Count	Plated?
γ	0.012	93	YES
+	0.028	20	YES
×	0.035	9	YES
•	0.038	52	YES
□	0.060	4	YES
∇	0.100	2	YES
⊕	0.125	4	YES
⊗	0.157	2	YES

Title: (unknown) - Fabrication Drawing
 Author: Michael McMaster
 Date: Wed 09 Oct 2013 11:01:07 GMT UTC



Board outline is the centerline of this path